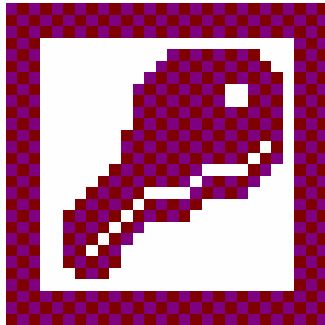


SmartLearnTM
Guide to



Access 2000 MOS
(Part 1)

LEGAL NOTICE

© 2003 by SmartTrack Ltd., United Kingdom.

Parts of these materials may be the property of other copyright holders, permission from whom has been sought by SmartTrack for the production of these materials.

Such permission of reproduction and modification is NOT implicitly given to the users or customers of these materials.

This material is copyrighted and all rights are reserved to SmartTrack Ltd., and other respective copyright owners. No part of this publication may be reproduced, transmitted, transcribed, stored in a retrieval system, or translated into any language or computer language, in any form or by any means, electronic, mechanical, magnetic, optical, chemical, manual, or otherwise, without the prior written permission of the owners of the copyrights.

The creators, suppliers and copyright holders of this material make a sincere effort to ensure the accuracy of the material described herein; however, they make no warranty, express or implied, with respect to the quality, correctness, reliability, accuracy, or freedom from error of this material or the products it describes. Data used in examples and sample data files are intended to be fictional. Any resemblance to real persons or companies is entirely coincidental.

The names of software products referred to in this manual are claimed as trademarks of their respective companies.

SmartLearn™ is a registered trademark of SmartTrack Ltd.

vLearning™ is a registered trademark of SmartTrack Ltd.

SmartTrack™ is a registered trademark of SmartTrack Ltd.

Microsoft™ is a registered trademark of Microsoft, Inc.

© 2003 by SmartTrack Ltd., United Kingdom.

© 2003 by VBL Systems Ltd., United Kingdom

The customer may not :

Edit or modify any of the courseware in any way whatsoever.

Allow the materials to be used by any persons other than those for whom a usage licence fee or pay-per-view charge has been paid to SmartTrack Ltd.

Allow the materials to be copied onto removable media and the materials may not be transferred to any other persons or party using any means whatsoever including but not restricted to email, file transfers or hard drive copy.

Resell or re-license electronic, magnetic or printed versions of any SmartLearn content (either original or modified).

Translate, modify or create derivative work of the product (SmartLearn system and/or content) or attempt to create a product that is visually or functionally similar to the product.

LIMITATION OF LIABILITY

SmartTrack does not warrant that the Product will meet the Customer's requirements, or will operate in combination with other programs that the Customer selects, or that the operation of the Product will be uninterrupted or error-free.

SmartTrack will not be liable for any indirect, special or consequential damages related to or arising out of this agreement, including, but not limited to, damages for lost data, downtime, lost goodwill, or lost business, even if the customer has notified SmartTrack of the possibility of such damages.

TERMS OF USAGE

The Customer may not sublicense, assign, delegate, or otherwise transfer the Product, or any of the Customer's rights or obligations under this Agreement, to any non-affiliated third party without our prior written approval, which approval shall not be unreasonably withheld. The Customer may assign this Agreement, and the Customer's rights hereunder, to an affiliated corporation, provided that the Customer notifies SmartTrack in advance, in writing of such assignment, all copies of the Product provided to or made by the Customer are either transferred to the assignee or destroyed, and the assignee agrees in writing to all of the terms and conditions of this Agreement. For the purpose of this Agreement, an 'affiliated' party means any third party controlling, controlled by or under common control with, the Customer.

OTHER

The Customer acknowledges that the Product is protected by UK, United States and International copyright laws and international treaty provisions and that all right, title and interest in and to the Product is, and remains in, SmartTrack and its licensors, except for the right to use the Product in accordance with the Customer Licence Agreement. SmartTrack and its affiliates retain all rights not expressly granted, including all rights pertaining to their names and trademarks. Nothing in this License Agreement constitutes a waiver of SmartTrack's rights under UK, USA and International copyright laws or any other laws or international treaty.

By reading, printing or viewing this document, the Customer and end user understands and agrees that :

1. the material may be used to provide training at a single designated site, such as a training centre, school, or corporate address.
2. under no circumstances may any files contained in the training materials be made available on a network, internet, intranet, CD-ROM, DVD, or similar medium.
3. the training material must not be re-sold, rented, assigned or transferred to any third party in any form.
4. they are licensed to use the training material until the license term and that they must renew their license after this date in order to continue using the training material. If the licence is not renewed, all instances of the materials, in all forms, must be removed and/or destroyed within 5 days of the end of the licence term.
5. the copyright remains with the copyright holders and that under no circumstances may any copyright notices be removed.

1.1 Contents

1.1	Contents	4
2	About This Course	6
2.1	Who Is It For and How Do I Use It?	7
2.2	What Do the Icons Mean?	8
2.3	Getting Help	9
2.4	Using Help in Access 2000	10
2.5	Working with Windows	12
3	Getting Started.....	15
3.1	Starting and Closing Access	16
3.2	Opening, Saving, & Closing a Database	18
4	The Basics.....	20
4.1	What Is a Database?	21
4.2	The Parts of an Access Database	22
4.3	Using Tables	25
4.4	Changing the Look of a Table	30
4.5	Finding and Sorting Records	33
4.6	Printing Tables	36
5	Queries	38
5.1	Creating a Simple Query	39
5.2	Changing the View	44
5.3	Editing a Query	45
5.4	Adding Criteria to Queries	46
5.5	Numbers, Dates and Wildcards	49
5.6	Adding More than One Criteria	51
5.7	Sorting Queries	54
5.8	Showing/Hiding Fields	57
6	Forms.....	58
6.1	Using Forms	59
6.2	Creating a Form	61
6.3	Changing Form Design	63
6.4	The Parts of a Form	65
6.5	Controls and Labels	67
6.6	AutoFormat	73
6.7	Tab Order	74
6.8	Saving Design Changes to a Form	75
7	Reports	76
7.1	Using Reports	77
7.2	Creating Reports	79
7.3	Changing the Design of a Report	82
7.4	The Parts of a Report	83
7.5	Adding Extras	85
7.6	Mailing Labels	88
8	Moving And Copying	90
8.1	Moving and Copying	91
9	Creating A Simple Database	95
9.1	Planning a Database	96
9.2	The Golden Rule	97
9.3	Creating a New Database	100
9.4	Creating Tables	102
9.5	Changing the View of a Table	109

9.6	Changing Table Design	110
9.7	Field Properties	112
9.8	Lookup Fields	119
10	Relationships	124
10.1	What Are Relationships?	125
10.2	Creating a One to Many Relationship	127
10.3	Troubleshooting Creating a Relationship	133
10.4	Editing a Relationship	135
10.5	Main and Sub Tables.....	138
10.6	Main and Sub Forms	141
10.7	Changing the Design of a Sub Form	145
10.8	Creating a Many to Many Relationship	149
10.9	Creating Main and Sub Forms for a Many to Many Relationship	153
10.10	Creating a One to One Relationship	156
A	Index	159
A-1	Index	160

2 About This Course



2.1 Who Is It For and How Do I Use It?

2.1.1 Who Is It For?

This manual is designed for use with the Access 2000 MOS (Part 1) course with SmartLearn.

It is not meant as a replacement to the full reference manuals that come with Access 2000.

2.1.2 How Should I Use it?

This manual is a step by step guide to the functions taught in the Access 2000 MOS (Part 1) course.

You should be able to find the part you're after by looking in the index and contents and noting that the general course will follow the pattern of the manual.

The step by step parts are in italics. Simply do the things on the left, and read the things on the right for further information.

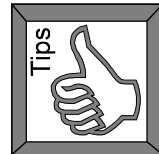
This is what you do

This is a description of what is happening

2.2 What Do the Icons Mean?

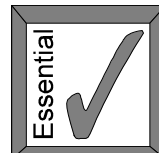
Tips

Handy tips that make your work easier



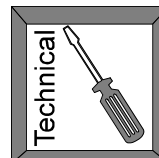
Essential

Essential points to understand how to do the work in hand



Technical

Technical (non-essential) points for the technically minded



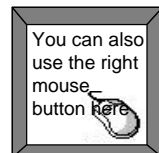
Traps

Hints to help you with certain features that may just trip you up if you are not aware of them!



Right Mouse Button

This means that pressing the right mouse button (instead of the left mouse button) will bring up a short cut menu that can achieve the same things as listed in the text



2.3 Getting Help

Access 2000 keeps the screen fairly simple. But don't expect to have to remember the functions. There are several levels of help:

2.3.1 Using this Guide

This guide contains all the basic functions of Access 2000. Use the Table of Contents and the Index to find the functions that you need explained.

2.3.2 Help Function

The on-screen help function explains commands in detail. It is simple to use...

1. *Press F1*
2. *Press buttons and scroll bars as required to get more help*

For help on a particular part of the screen...

1. *Press Shift F1*
2. *Click on the area of the screen you wish to know about*

To close help...

Alt + F4

Or

File menu: Exit (make sure you get the File menu for the help and not for the software)

For more information on using the Office Assistant in Access 2000 see the next page.

2.3.3 The Official Access 2000 Manual

Software manuals have improved. Use them as a reference on specific functions, rather than for a general read on how to use the software.

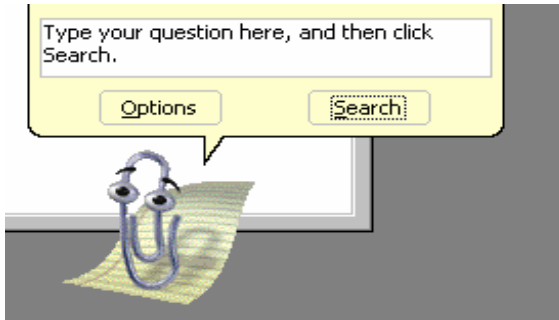
Go to the reference section and look up the thing you want explained.

2.4 Using Help in Access 2000

Access 2000 comes with an animated Office Assistant to help you if you get stuck.

2.4.1 Opening the Office Assistant

1. Click on Help menu
2. Click on Show Office Assistant



2.4.2 Asking a Question

1. (Click on the Office Assistant if there is no dialog box showing) Type your question into the space provided
2. Click on Search
3. Click on the light bulb next to the topic you are interested in



4. Your answer will appear in a new Help window

2.4.3 Printing the Answer



Click on the Print icon in the Help window

2.4.4 Closing the Help Window

Click on the X at the top right of the Help window



Click here to close Help

2.4.5 Hiding the Office Assistant

1. *Click on the Help menu*
2. *Click on Hide Office Assistant*

2.5 Working with Windows

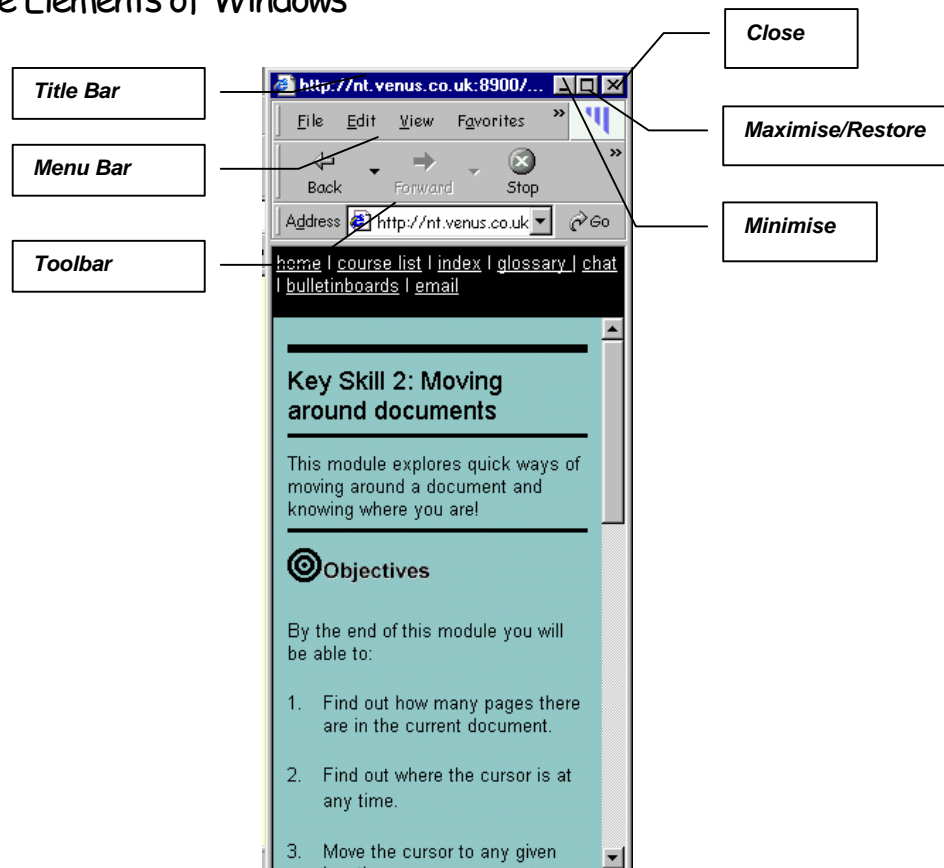
2.5.1 What Are Windows?

Every task which you perform on your computer will open in a box called a *window*. For instance, when you open Word, a window appears on the screen containing the software. You then work inside the window.

It is possible to have many windows open at once. Our online courses require you to have at least two windows open...

- **Internet Browser** (e.g. Internet Explorer, Netscape Navigator), which contains course modules.
- The **software** you are learning, e.g. Word, Excel, Outlook

2.5.2 The Elements of Windows



2.5.3 Minimising Windows

Minimising a window makes it temporarily disappear! Use it if you have to get a window out of the way so you can see something else!

Click *Minimise* at the top right of the window



To restore a window after it has been minimised...

Click the name of the window from the task bar at the bottom of the screen




2.5.4 Maximising/Restoring Windows

Maximise allows you to make a window fill the whole of the screen. Use it when you want to concentrate on just one window. Maximise is interchangeable with Restore. When you restore a window it is still visible, but will not fill the whole screen. You can change the restored shape to anything you want by resizing the window (see below).

Maximising a Window...

Click Maximise at the top right of the window




Window will fill the screen
Maximise button will change to
Restore button 

Restoring a Window...

Click Restore at the top right of the window



Window will shrink
Restore button will change to
Maximise button 

2.5.5 Closing Windows

Click the x at the top right of the window



2.5.6 Switching Between Windows

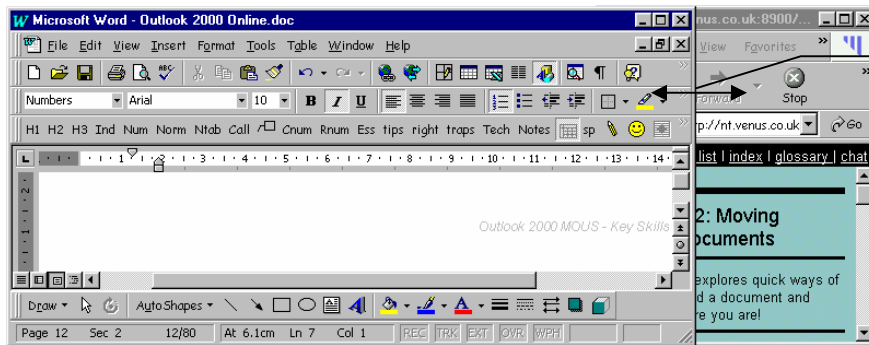
Click the window you require on the task bar Window will appear on screen



2.5.7 Resizing Windows

1. Ensure that the window is restored
2. Position the mouse at the edge of a window
3. Click and drag

*If the window is minimised or maximised you can't resize it!
Mouse will change to a double headed arrow*



**The window for Word is overlapping the Browser window.
If you position your mouse at this edge and drag to the left, you will make the window narrower, and get rid of the overlap.**

2.5.8 Moving Windows

1. Ensure that the window is restored
2. Position the mouse on the blue title bar

*If the window is minimised or maximised you can't move it
Mouse will change to a white arrow*



3. Click and drag to move the window to a new position